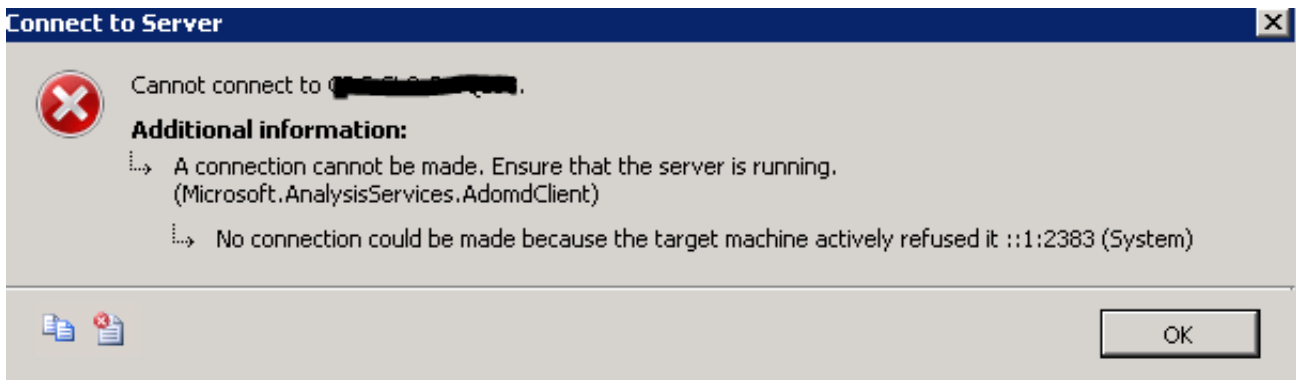


## Cannot connect to named instances of Analysis Services after fresh installation or rename of server

Author : contactng

Many a times when a new SQL Server 2008 R2 analysis services instance is installed or a server is renamed then following error is received while trying to connect to named instance of analysis service,



### ADDITIONAL INFORMATION:

A connection cannot be made to redirector. Ensure that 'SQL Browser' service is running.  
(Microsoft.AnalysisServices.AdomdClient)

No connection could be made because the target machine actively refused it ::1:2383 (System)

This is mostly because of browser service account not given appropriate privileges or permissions are not set correctly, in this scenario do following,

1. Go to Start > Computer > right click, select Manage > Server Manager > Configuration > Local Users and Groups > Groups
2. Check for SQL Server Browser Group name, for e.g. (Note down the name)

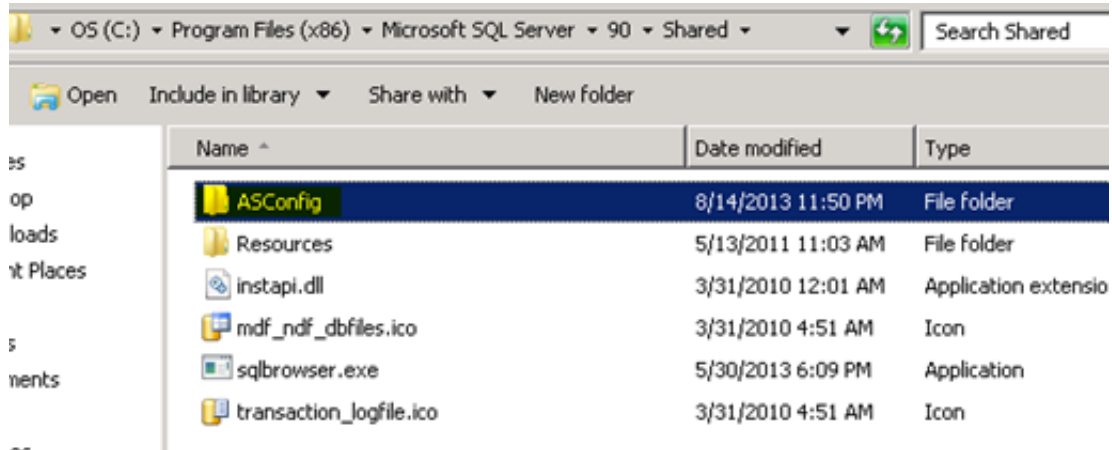


Members in the group have the requ...

3. Now navigate to following folder,

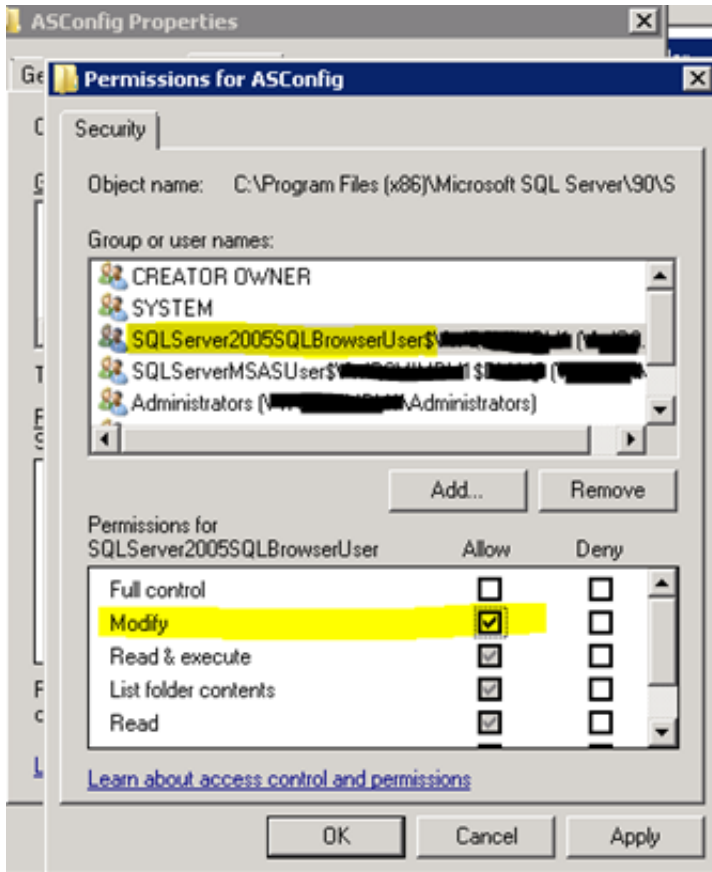
c:\Program Files (x86)\Microsoft SQL Server\90\Shared

4. Inside it there will be **ASConfig** folder,



5. Right click **ASConfig** folder > Go to Properties > Go to Security tab

6. Check if same SQL Browser Service group present or not, if present then edit the permissions and give Write permissions and If SQL browser group not present then add it and give write permissions as below,



7. Now go to "SQL Server Configuration Manager" (Start > All Programs > Microsoft SQL Server 2008 R2 > Configuration Tools > SQL Server Configuration Manager)

8. Stop SQL Server Browser Services

9. Stop SQL Server Analysis Services

10. Start SQL Server Browser Services

11. Start SQL Server Analysis Services

12. Try to connect SQL Server Analysis Services using SSMS or Powershell, etc. it should work fine!

Above solution shall work perfectly, in case it doesn't then follow below links, they have provided few more workarounds for similar kind of issue,

For e.g. Restart Browser Service with -c switch or Connect Analysis services using port number, etc.

<http://connect.microsoft.com/SQL/feedback/details/679792/sql-browser-cannot-connect-to-named-instances-of-analysis-services>

Replace with  
your logo

**Ramblings of a SQL DBA mind... by Nitin Garg**

Ramblings of a SQL DBA mind...

<http://blogs.lostincreativity.com/sqldba>

---

<http://support.microsoft.com/kb/2658571>

<http://asstoredprocedures.codeplex.com/discussions/441913>

<http://multidimensionalmayhem.wordpress.com/2012/08/28/a-novel-workaround-for-an-infamous-ssas-connection-error/>