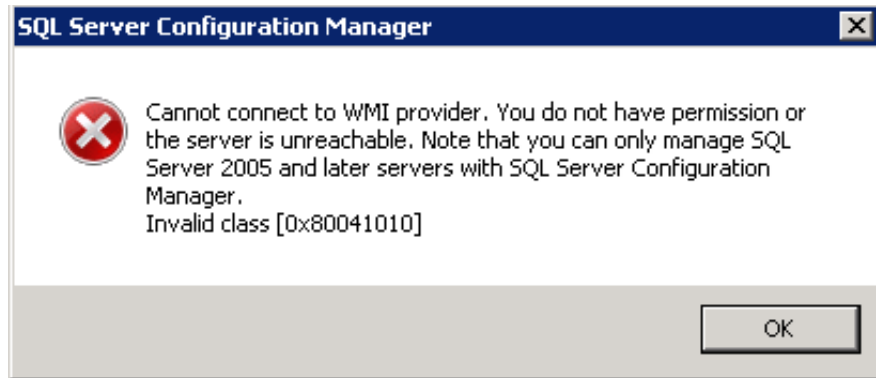


SQL Server Configuration Manager – Cannot connect to WMI provider – Invalid class [0x80041010]

Author : contactng

Error Screenshot:



Resolution:

Open command prompt and execute below command,

```
mofcomp.exe "C:\Program Files (x86)\Microsoft\Microsoft SQL Server\100\Shared\sqlmgmproviderxpsp2up.mof"
```

Note: to cross verify, ensure that **sqlmgmproviderxpsp2up.mof** exists as above said location, if you are using SQL 2012 or later, go to appropriate shared folder on C: and update the command and execute

This will show results like below,

```
C:\Users\ngarg_admin>mofcomp.exe "C:\Program Files (x86)\Microsoft SQL Server\100\
Shared\sqlmgmproviderxpsp2up.mof"
Microsoft (R) MOF Compiler Version 6.1.7600.16385
Copyright (c) Microsoft Corp. 1997-2006. All rights reserved.
Parsing MOF file: C:\Program Files (x86)\Microsoft SQL Server\100\Shared\sqlmgmp
roviderxpsp2up.mof
MOF file has been successfully parsed
Storing data in the repository...
Done!
```

Now, SQL Server configuration manager should open fine without any issues.

References:

<https://social.msdn.microsoft.com/Forums/sqlserver/en-US/4c8ca86c-105f-4f0a-ac18-6e33dda2bc46/sql-server-configuration-manager-cannot-connect-to-wmi-provider-invalid-class-0x80041010?forum=sqlkjmanageability>

<http://support.microsoft.com/kb/956013>

Like this:

Like Loading...